

## Turnitin in Canvas

### [Turnitin Canvas Guides](#)

- Create a new Assignment either by adding to a Module or by going directly through the course Assignments.

#### To add an assignment to a Module

- Click



- Next to the name of the Module where the assignment belongs, click



- From the drop-down box, choose **Assignment** to select

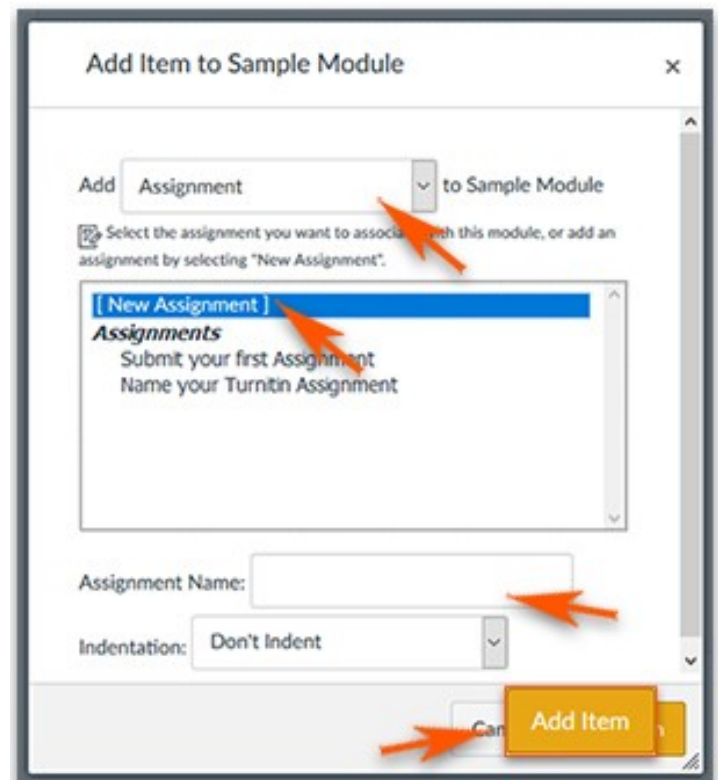
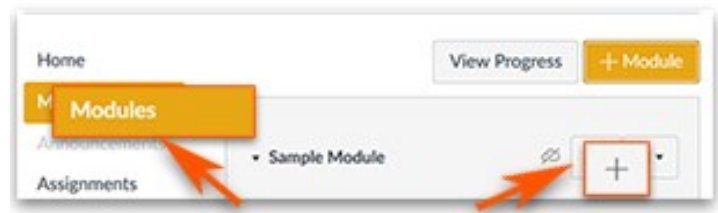


- Give the Assignment a name

- Click



- Once the Assignment is added to the Module, click directly on the name of the newly added Assignment to Edit.

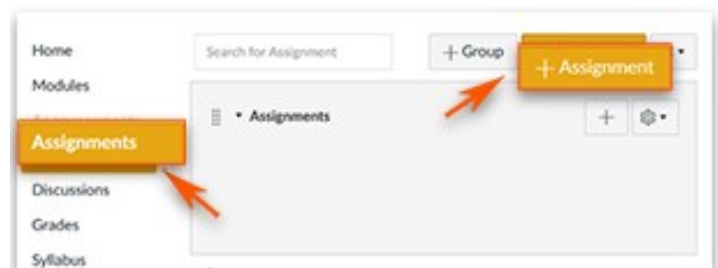


#### To create new assignment under Assignments

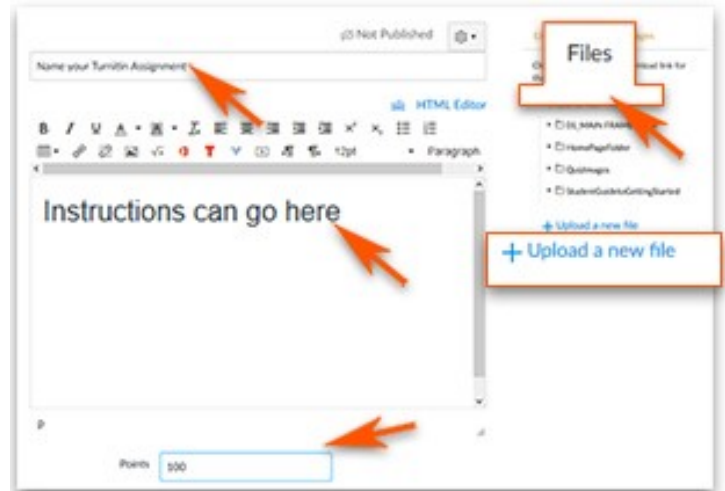
- On the course menu, click



- Click

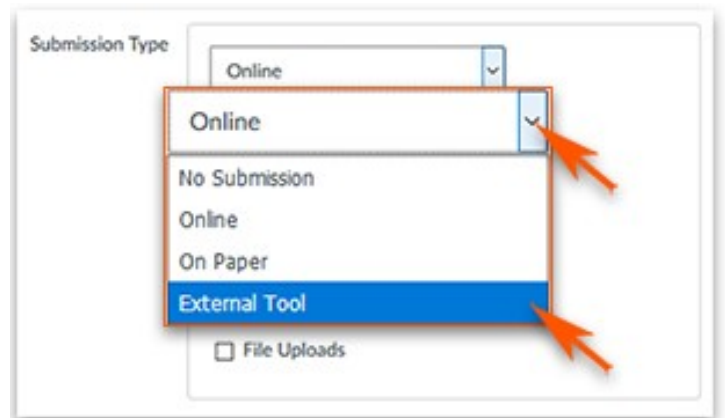


- Name your Assignment
- Add the necessary instructions
- You can add files as needed.
- Add the point value



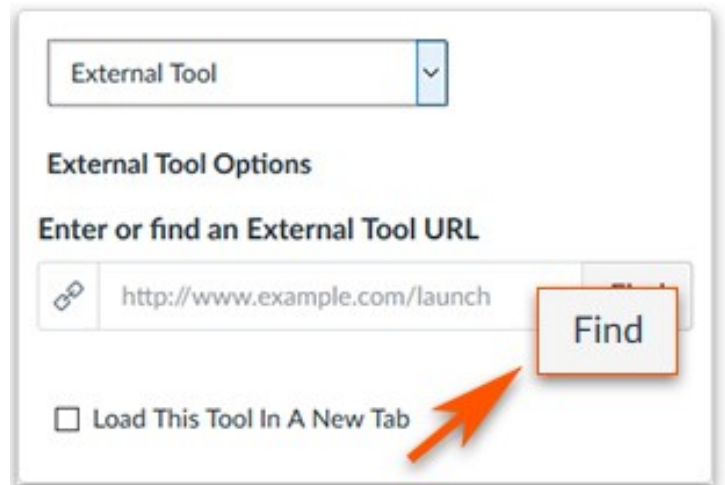
- Scroll to Submission Type to click

External Tool



- Click

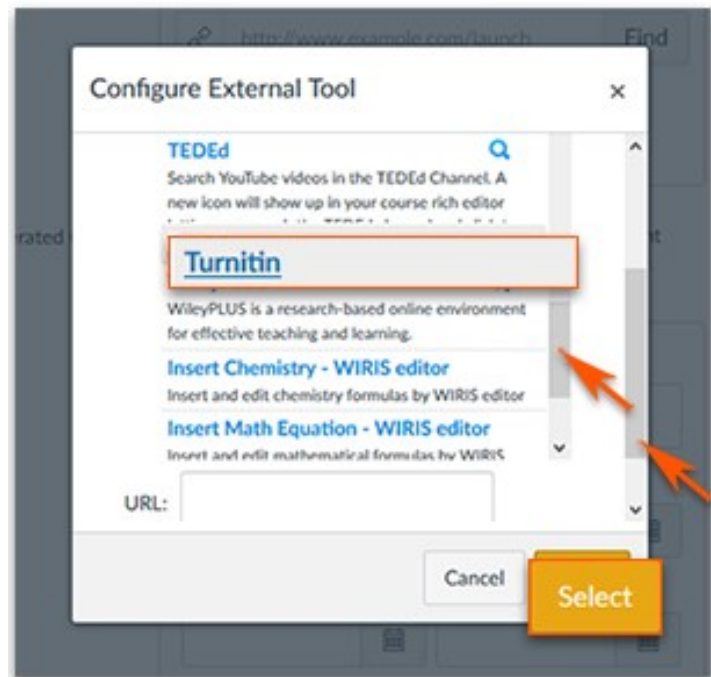
Find



- Locate and click



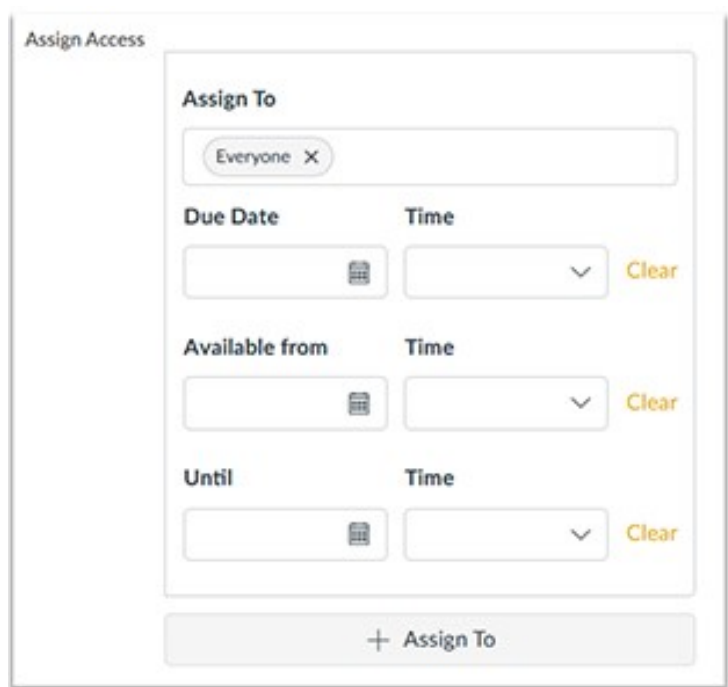
- Click



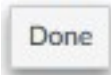
“Load to this tool to a new window” is a matter of preference. The assignment seems to flow better if you do not select it.



- The default setting is to “Everyone” in the course, but this can be changed.
- Add the Due Date. It is important to know the Due Date controls Turnitin’s due date which is Turnitin’s last day to submit. This can be changed under the Turnitin Optional Settings.
- To open the calendar tool, click



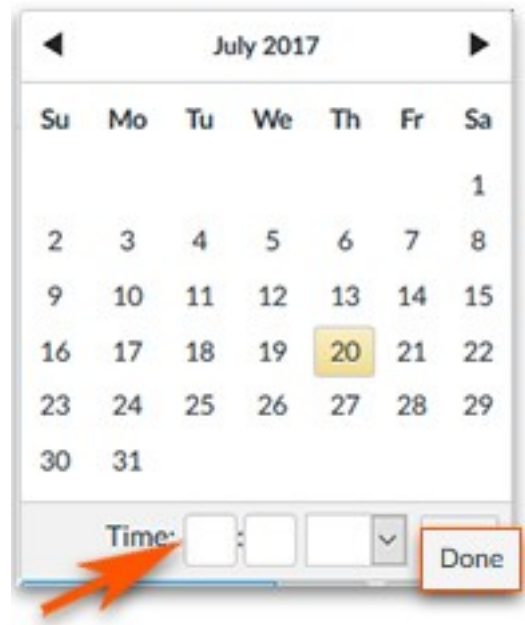
- Pick the date from the Calendar.
- Enter the time in the box below, if you do not want the default time of 11:59pm
- Click



- To get to the Turnitin settings page, click



You must publish the assignment to complete the Turnitin process.

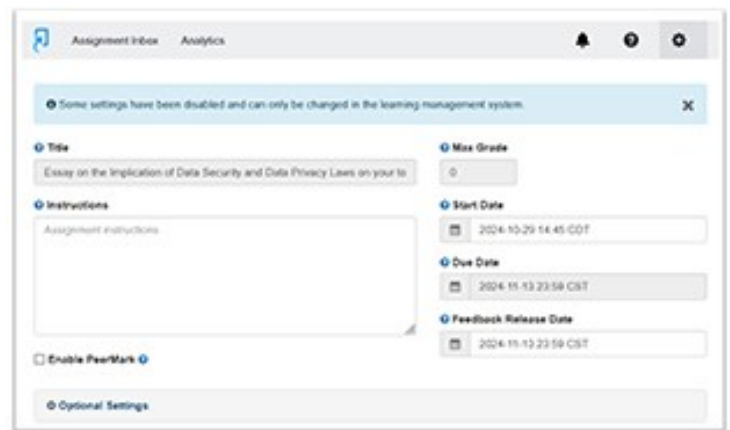


**Once Saved and Publish**, the assignment will kick to the Turnitin drop box. All student submissions will start appearing here for the instructor.

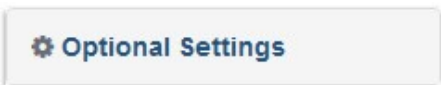
- To setup your Turnitin Options, click




- To return to the Canvas Assignment settings, click




allows you to report technical issues with Turnitin. Turnitin Settings allows you to setup dates and times, specify file requirements.



- under
- Turnitin provides further explanations of the by clicking  next to each setting option

➤ Click

A blue rectangular button with rounded corners and a subtle drop shadow, containing the word "Submit" in white, sans-serif font.

**Note: Turnitin does not recognize the Canvas Student View. Turnitin will throw an error when attempting to preview from Student View.**

**If you have problems with Turnitin, use the Helpdesk link to report it.**

**The Turnitin Admin for Southern Miss is Gene'O Gordon ([eugene.gordon@usm.edu](mailto:eugene.gordon@usm.edu))**