

# KUDOS

Noun: Acclaim or praise for exceptional achievement

Jack and Patti Phillips Workplace Learning and Performance Institute

Volume 1, Issue 3, 4<sup>th</sup> Quarter 2011

## CONGRATULATIONS 2011 FALL GRADUATES



Program	Name	Dissertation/Project Topic
HCD PhD	Rich Jeffries	Investments in Leadership and Management Succession Planning at a Department of Defense Organization in the Southeastern United States: A Review of Strategic Implications
MS WTD	Paula Dauro	Customer Assistance (CA) Specialist Training

## SUCCESSFUL DEFENSES

Congratulations to the following HCD PhD students who successfully defended their dissertations or dissertation prospectuses (Chapters I-III).

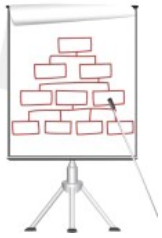
Phase	Name	Dissertation/Project Topic
Dissertation Defense	Mamie Griffin	Manufacturing Mississippi's Workforce: An Assessment of Employability Skills as Perceived by Faculty and Senior Students of Four Year Manufacturing Related Degree Programs
	Susan Bush	Determining the Individual, Organizational and Community-Level Outcomes of a Community Leadership Development Program as Perceived by the Program Alumni
Proposal Defense	Pete Fullerton	The Effects of Tax Increment Financing on the Assessed Land Values in Kansas City, Missouri
	Dionne Davis-Green	Examining the Relationship Between Social Capital and Career Success Among Welfare to Work Participants
	Evelyn Green	Employee Volunteer Perception of the Benefits of Employee Volunteerism in Business-Education Partnerships to Employee Volunteers and Business
	Deborah Moore	America Reads Mississippi Future Teacher Corps: A Study of Program Completers' Perception of Factors Influencing Their Decision to Become and Remain Classroom Teachers

## PROMOTIONS/NEW POSITIONS

- ★ **Donnie Bond**, WTD Alumnus, has been promoted to the Director of Learning and Performance at Coast Electrical Power Association. Donnie researches, plans, organizes and facilitates various training programs, including new employee orientation, skills training, supervisory training and leadership training.
- ★ **Darrel Lewis**, WTD Alumnus, accepted a position as the Operations Training Manger for the Brock Group, a specialty construction contractor headquartered in Houston, TX with locations throughout North and South America, U.S. Virgin Islands, and Canada. Darrel is responsible for developing, designing, facilitating, and evaluating various training programs, ranging from Management/Leadership to Craft Development, for Brock's 15,000-plus employees.
- ★ **Christy McCarly**, current WTD student, joined CPSI in Mobile, AL as a MP-EMR Clinical Support Representative. Christy works with clinics implementing electronic medical records systems, the majority of locations are in rural areas.
- ★ **Janea McDonald**, WTD Alumnus and current PhD student, has launched Edge Consulting, LLC. Edge Consulting specializes in helping organizations with their human resource development and management needs as well as website development and helping individuals with resume' and interview preparation.
- ★ **Toni Myer**, WTD Alumnus, has been promoted to the position of Director, Corporate and Continuing Education at Baton Rouge Community College. Her responsibilities include building programs for Workforce Development, Continuing Education open enrollment courses and construction training. Toni also works with corporate programs, including working with business and industry to develop curriculum, assessments, and skills upgrades for incumbent workers.
- ★ **Michael Perry**, WTD Alumnus, accepted the position of Certified EpicCare Ambulatory EMR Principal Trainer at the University of Mississippi Medical Center. Michael creates curriculum, builds and maintains a training environment, researches and designs tip sheets, and updates e-learning modules using Adobe Captivate.
- ★ **Kathy Pipitone**, WTD Alumnus, has been promoted to the position of Director of Faculty Services in the School of Medicine Office of Faculty Affairs at the University of Mississippi Medical Center. Her job is focused on the development and implementation of institutional policies, procedures, and processes that advance the School of Medicine faculty in the academic missions of education, research, and clinical service.



## PUBLICATIONS/PRESENTATIONS



- \* **Mamie Griffin**, current PhD student, shared her dissertation results (see page 1) at the 2011 ATMAE convention in Cleveland, OH on November 9 - 11, 2011. ATMAE is the Association of Technology, Management, and Applied Engineering, a national accrediting and certification body.
- \* **Ker Ferguson**, current PhD student, published an article titled "Commercialization of University Research for Technology Based Economic Development" published in *Industry and Higher Education*. Ker also served as a Keynote Speaker for the Gulf Coast Patent Association on June 10, 2011. His topic was "University Inventions and Innovation, What's the Connection?" He also served as a speaker and panel moderator for the University Economic Development Association on October 12, 2011. His topic was "Metrics for Commercialization of University Technologies and Technology Based Economic Development."
- \* **Dr. Lindsey Lewis**, HCD and WTD Alumnus, presented two topics at the Southeastern Employment and Training Association (SETA) conference in September; "Adults are Big Babies... and other Important Things to Know about Adult Learners" and "Don't Just Train: Retain."
- \* **Janea McDonald**, WTD Alumnus and current PhD student, presented "Generations @ Work: Bridging the Gaps" at the Mississippi Transportation Institute's conference in Biloxi, MS on November 2, 2011.

## AWARDS/ACCOMPLISHMENTS

- \* **Ker Ferguson**, current PhD student, has been appointed to the Board of Directors for the Biotechnology Association of Alabama.
- \* **Evelyn Green**, current PhD student, was awarded the Gulf Coast Faculty Development Grant which will support her dissertation research.

### ROI INSTITUTE™ EVALUATION WEEK

The ROI Institute, along with The University of Southern Mississippi, are pleased to announce [Evaluation Week](#), scheduled for March 12-16, 2012. Click the link for more information. Hope to see you there!

*"Live as if you  
were to die  
tomorrow. Learn  
as if you were to  
live forever."*

*-Gandhi*



**Get all the latest news!**



Click the icon above to like us on Facebook or search for "The University of Southern Mississippi WLPI".



Click the icon above to follow us on Twitter or look for us at #USMwlpi.



- \* Current students must complete the RCR training. Be sure to send your certificates of completion to [Janea McDonald](#).
- \* All students, past and present, need to complete a [bio](#) and send in a picture.
- \* Be sure to check out the Program Guides for each of the programs to find out more about the requirements for: [HCD](#) and [WTD](#).

Do you have something you want to share? Please let [Dr. Cyndi Gaudet](#) or [Dr. Heather Annulis](#) know!



*Work Hard. Have Fun. Make a Difference.*