

# MISSISSIPPI TEACHER RESIDENCY PROGRAM

**SOUTHERN MISS | EDUCATION AND HUMAN SCIENCES**

## Frequently Asked Questions

### **Who is the Mississippi Teacher Residency (MTR) program designed for?**

The MTR program is a pathway to initial licensure as an elementary/special education teacher for individuals with bachelor's degrees in areas outside of education.

### **Who is eligible for the program?**

Applicants must have (or will have by May 2023) a bachelor's degree in any area. In addition, they must meet **one** of the following criteria:

- 21 or higher on the ACT;
- Passing scores on all sections of the Praxis Core; OR
- Minimum of a 3.0 GPA in the last 60 hours of college coursework.

### **What makes this program different from other teacher preparation programs?**

- A full academic year internship in an elementary school with one of USM's 6 district partners. During this internship, residents gradually take on increasing classroom responsibilities.
- One-year graduate program leading to a master's degree with coursework that is aligned to residents' classroom experience.
- Preparation for dual certification in Elementary Education (K-6) and Special Education (Mild/Moderate, K-8).
- Support from two high-quality cooperating teachers – one in general education and one in special education.

### **Who are USM's district partners in the MTR program?**

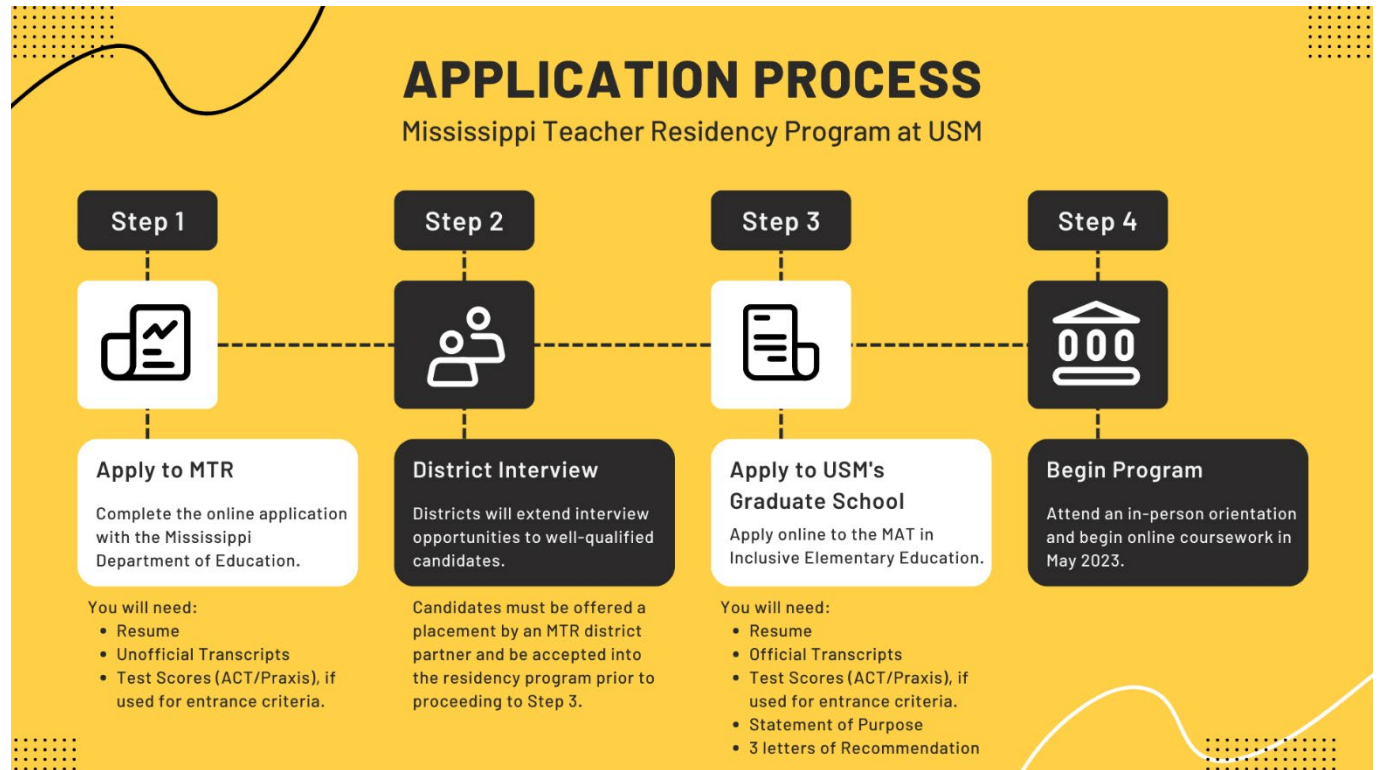
For the 2023-24 school year, placements are available in the following districts:

- Columbia School District
- Forrest County School District
- Hattiesburg Public School District
- Jackson County School District
- Moss Point School District
- Pass Christian Public School District
- Perry County School District

## Can residents complete this program from anywhere in Mississippi?

No, residents must be placed with one of USM's 6 district partners.

## What is the application process?



## What are the application deadlines?

The Mississippi Department of Education has published the following deadlines to be utilized across all MTR programs in the state.

	<b>Application Deadline</b>	<b>Applicants Notified</b>
Priority Applicants	February 15, 2023	February 28, 2023
Round 2 Applicants	March 15, 2023	March 31, 2023
Round 3 Applicants	April 15, 2023	April 30, 2023

May 10, 2023, is the deadline for admission to USM's Graduate School.

## How many residents will USM accept?

We will accept up to 36 residents for the 2023-24 school year.

## Is all the degree coursework online?

Yes, all coursework is completed online over the course of three semesters. In addition to the online coursework, there will be a face-to-face orientation meeting prior to the start of the program as well as 3 synchronous professional development workshops throughout the school year.

## What is my time commitment in the residency classroom?

USM teacher residents spend 3.5 days in the classroom each week during the fall semester and 5 full days each week during the spring semester.

**What calendar do I follow as a resident?**

You will follow the calendar of your placement district, observing breaks and holidays as outlined by their academic calendar.

**When does the program start?**

Residents will participate in a two-day face-to-face orientation in late May. Online coursework will begin on May 30, 2023. Internship start dates depend on the schedule of the placement districts, with most districts starting mid-July to early August. Residents will begin their school placement with new teacher orientation and teacher professional development days prior to the arrival of students.

**Can I be employed while completing this program?**

Because of the intense nature of the MTR graduate program, outside employment is discouraged.

**Can I be employed by a school district while completing this program?**

USM believes strongly in the residency model of educator preparation, which includes a year-long placement within the classroom of a cooperating teacher. As such, we will not accept candidates who hold positions as a teacher of record during their residency.

**How much will residents have to pay for this program?**

Residents have minimal out of pocket costs to participate in the Mississippi Teacher Residency Program. All tuition, books and testing fees are covered by the MTR grant. Residents may be required to cover incidental fees such as the graduate school application fee, background check, graduation fee, etc.

**How much is the living stipend and who is eligible?**

During their year of residency, residents can receive a \$17,000 stipend. This is paid monthly (July 2023 through May 2024) during the resident’s internship placement. As the living stipend is designed to support residents who are not otherwise employed during residency, those who are employed by a school district during residency are not eligible to receive the living stipend.

**Is there a minimum required teaching commitment?**

Yes, residents agree to teach for two years following the completion of the residency, ideally in the residency district. This two-year commitment must be served in a school district deemed a Mississippi Geographical Critical Shortage Area.

**How can I learn more about the program?**

You can request more information by emailing our program director, Andrea Krell, at [andrea.krell@usm.edu](mailto:andrea.krell@usm.edu) or attending one of our virtual information sessions.

<p><b>Thursday, Jan. 19, 2023 from 7-8 p.m.</b>  <a href="#">Register here to receive the Zoom link!</a></p>	<p><b>Tuesday, Jan. 24, 2023 from 4-5 p.m.</b>  <a href="#">Register here to receive the Zoom link!</a></p>
--	---

**How do I apply?**

Visit the Mississippi Teacher Residency webpage from the Mississippi Department of Education to access the application: [mdek12.org/OTL/MTR](http://mdek12.org/OTL/MTR).